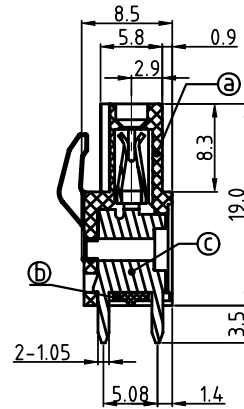
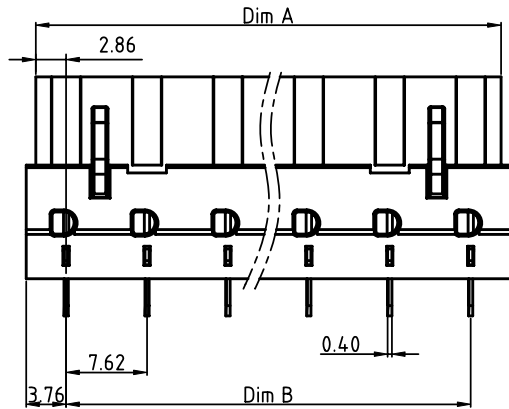
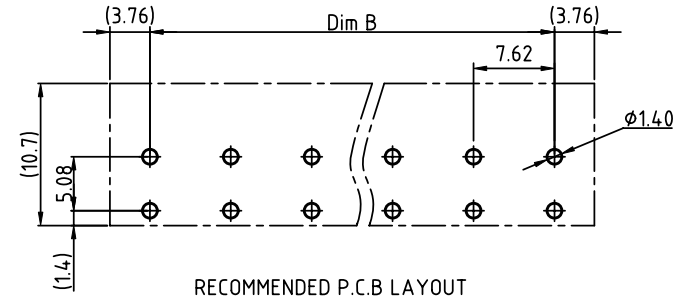
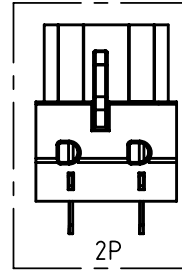
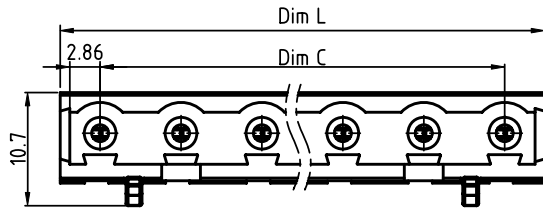


PRODUCT NUMBER	PITCH
V7xx01x000J0G	7.62 mm



Material:

- Item ① Terminal body: Thermoplastic (UL94V-0)
- Item ② Terminal Cover: Thermoplastic (UL94V-0)
- Item ③ Female contact: High conductivity copper, Tin plated

Electrical cULus

- Voltage rating: 300VAC
- Current rating: 20A
- Withstanding Voltage: 1.6kv
- Operating temperature: -40°C to +115°C
- Soldering temperature: 260°C±5°C/5 Sec
- Safety Approval:

N=Number of poles
 Dim L=(N-1)×7.62+7.52
 Dim A=N×7.62-1.9
 Dim B=(N-1)×7.62
 Dim C=(N-1)×7.62

poles	Tolerance
2-6p	±0.15
7-12p	±0.20
13-16p	±0.30

PART NO.: V7 xx 0 1 x 0 00J0 G

- | | | | | | |
|---|--------------|---------|-----------------|-------------------|-----------------|
| ↓ | Solid block | 0 | Black (RAL9005) | ↓ | Color |
| ↓ | No. of poles | 2 | Red (RAL3001/D) | ↓ | RoHS compliant |
| ↓ | 02 | 2poles | 3 | Orange(RAL2011/P) | (lead<4%) |
| ↓ | 03 | 3poles | 4 | Yellow(RAL1018/A) | In copper Alloy |
| ↓ | ... | ... | 5 | Green(RAL6018/T) | |
| ↓ | 16 | 16poles | 6 | Blue (RAL5015/A) | |
| | | | 8 | Grey(RAL7035/D) | |
| | | | 9 | White(RAL1102) | |
| | | | C | Green(RAL6018/U) | |

mat'l. code		surface ASME Y14.5	tolerance ASME Y14.5	projection 	product family TERMINAL BLOCK
ltr	ecn no	dr	date	tolerances unless otherwise specified	title TERMINAL BLOCK
				angles $X \pm 0.5$	PLUGGABLE PCB PLUG, VERTICAL
				flatness $X.X \pm 0.3$	scale MM
				total runout $X.XX \pm 0.1$	dwg no V7xx01x000J0G
		dr	EVIN ZHONG	050314	sheet 1 of 1
		enr	EVIN ZHONG	050314	size A4
		chr	HANKE FENG	050314	
		appd	SHI JUN	050314	type CUSTOMER Drawing
sheet index	revision	A			
	sheet	1			