

SST™-ESR2-CPX Universal Modbus* Modules



SST™-ESR2-CPX Modules connect Rockwell Automation CompactLogix L2, L3 and L4 controllers to Modbus* Ethernet and Modbus Serial networks, enabling high-performance, low-cost solutions for industrial automation applications

Features and Benefits

Modbus* Ethernet and Modbus Serial at the same time	Delivers an extremely flexible design and easy upgrades
Two Modbus Serial ports (software configurable)	Offers more value. Handles any Modbus Serial application
One Modbus Ethernet port (software configurable)	Suitable for any Modbus TCP/UDP application
MicroSD card slot (8 GB MicroSD card included)	Facilitates easy module swap-out
10/100 Mb Ethernet port	Enables fast configuration downloads. Provides backplane or front-module configuration options.
2,500-volt isolation	Ensures high immunity to harsh, noisy networks
MTBF of 181 years	Provides reliable, trouble-free usage



SST-ESR2-CPX-S Standard Version

SST-ESR2-CPX-P Plus Version



Applications

Machine Builders

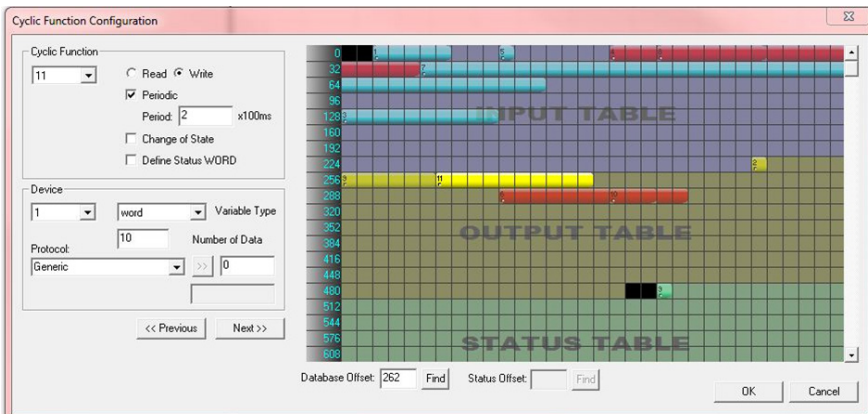
- Complex machines
- Packaging

Factory Automation

- Material handling

Process Control

- Water, wastewater treatment
- Food and beverage industry
- Oil and gas
- Pharmaceutical



Cyclic Function Screen Showing Data Overlapping Errors, Data mapping, Table Areas, Message Details

*Modbus is a registered trademark Schneider Automation Inc.

SST™-ESR2-CPX Universal Modbus* Modules



Specifications

Description

Supports CompactLogix† L2, L3 processors, ver. 15 and higher, L4 Ver. 20 and higher
 Operating temperature: 0 to 60°C
 Storage temperature: -40 to 85°C
 Relative humidity: 5 to 95%, non-condensing
 Independent, 3 electrically isolated communication ports, 2,500 Volts
 Modbus Master and/or Slave functionality, ASCII and RTU formats
 Modbus TCP/UDP, client and server supported
 1x Ethernet, 10/100 Mbps, RJ45 (for configuration and diagnostics)
 2x Serial, 110 bps to 115.2 kbps, RS232/RS485/RS422, RJ45 (DB9 male supplied cable)
 OS supported: Windows XP, 7 (32, 64-bit); Vista, 8 (32, 64-bit)
 Paging access (AOI provided), up to 32,000 words for input, output and status data (Plus version)
 MTBF: 181 years at 25°C
 Maximum Distance Rating: 4 slots

Included Hardware/Software

One, SST-ESR2-CPX-(S/P) Universal Modbus Module
 One, 8 GB MicroSD card
 One, product CD (engineering tools, configuration console)
 Two, 45cm, RJ-45 to DB-9 male patch cables

Compatible Protocols

Modbus Master (RTU or ASCII)
 Modbus Slave (RTU or ASCII)
 Modbus TCP and UDP Client and Server

Conformance

RoHS compliant
 CE certified
 FCC
 Korea CC
 Ex (ATEX)
 UL Class I Div 2, Groups A,B,C,D

Standard Version

496-word database
 32 Modbus commands/port
 Up to 32 devices per port
 OEM, machine builders, small applications

Plus Version

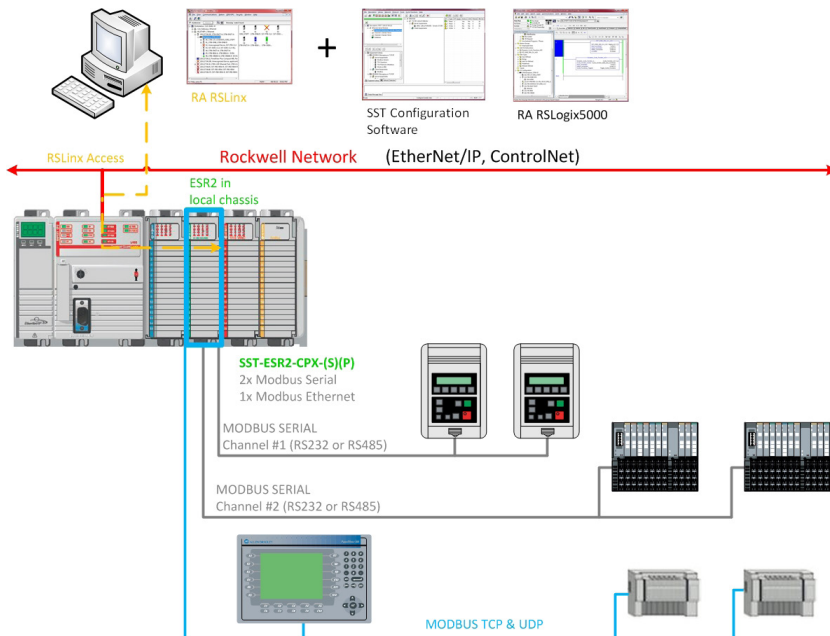
32,000-word database
 256 Modbus commands/port
 Up to 127 serial devices per port and 128 Ethernet devices
 OEM, machine builders, large networks
 SCADA applications

Ordering Information

Order No.	Product Name	Module
112073-0005	SST-ESR2-CPX-P	SST™ Universal Modbus Module for CompactLogix, Plus Version

Order No.	Product Name	Module
112073-0006	SST-ESR2-CPX-S	SST™ Universal Modbus Module for CompactLogix, Standard Version

Universal MODBUS* Module, SST™-ESR2-CPX Networking Capabilities Diagram



*Modbus is a registered trademark Schneider Automation Inc.

†CompactLogix is a registered trademark of Rockwell Automation, Inc.