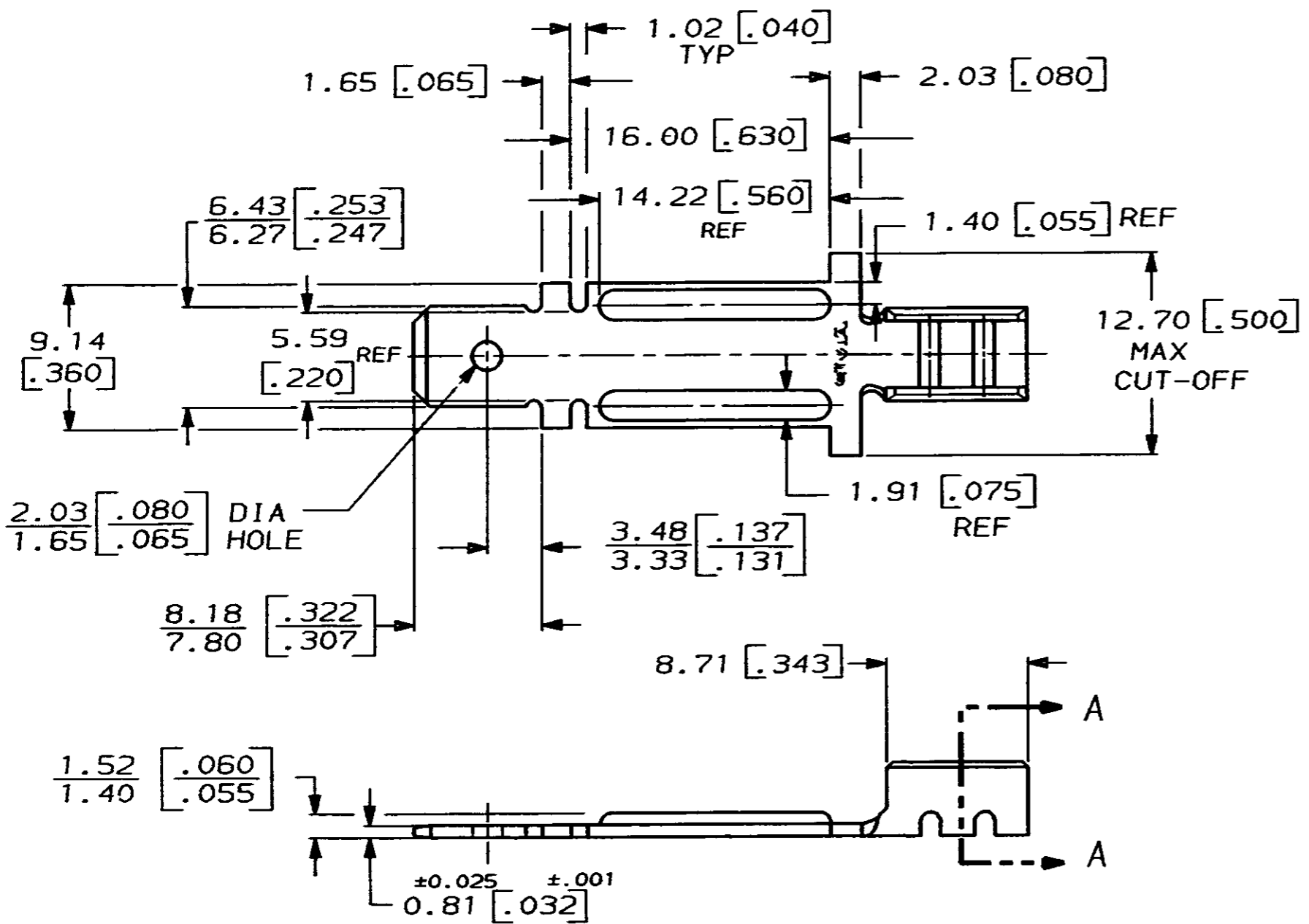
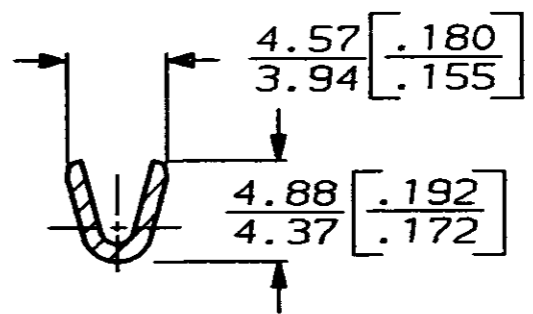


THIS DRAWING IS UNPUBLISHED. RELEASED FOR PUBLICATION, 19
 © COPYRIGHT 19 BY AMP INCORPORATED, HARRISBURG, PA. ALL INTERNATIONAL RIGHTS RESERVED. AMP PRODUCTS MAY BE COVERED BY U. S. AND FOREIGN PATENTS AND/OR PATENTS PENDING.

LOC	DIST	REVISIONS				DATE	APPROVED
AF	50	P	F	ZONE	LTR	DESCRIPTION	
					A	RELEASED	4/7/89



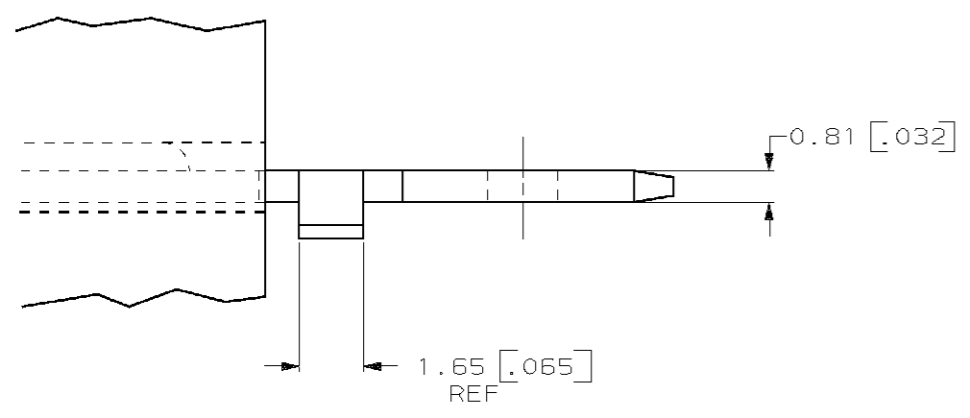
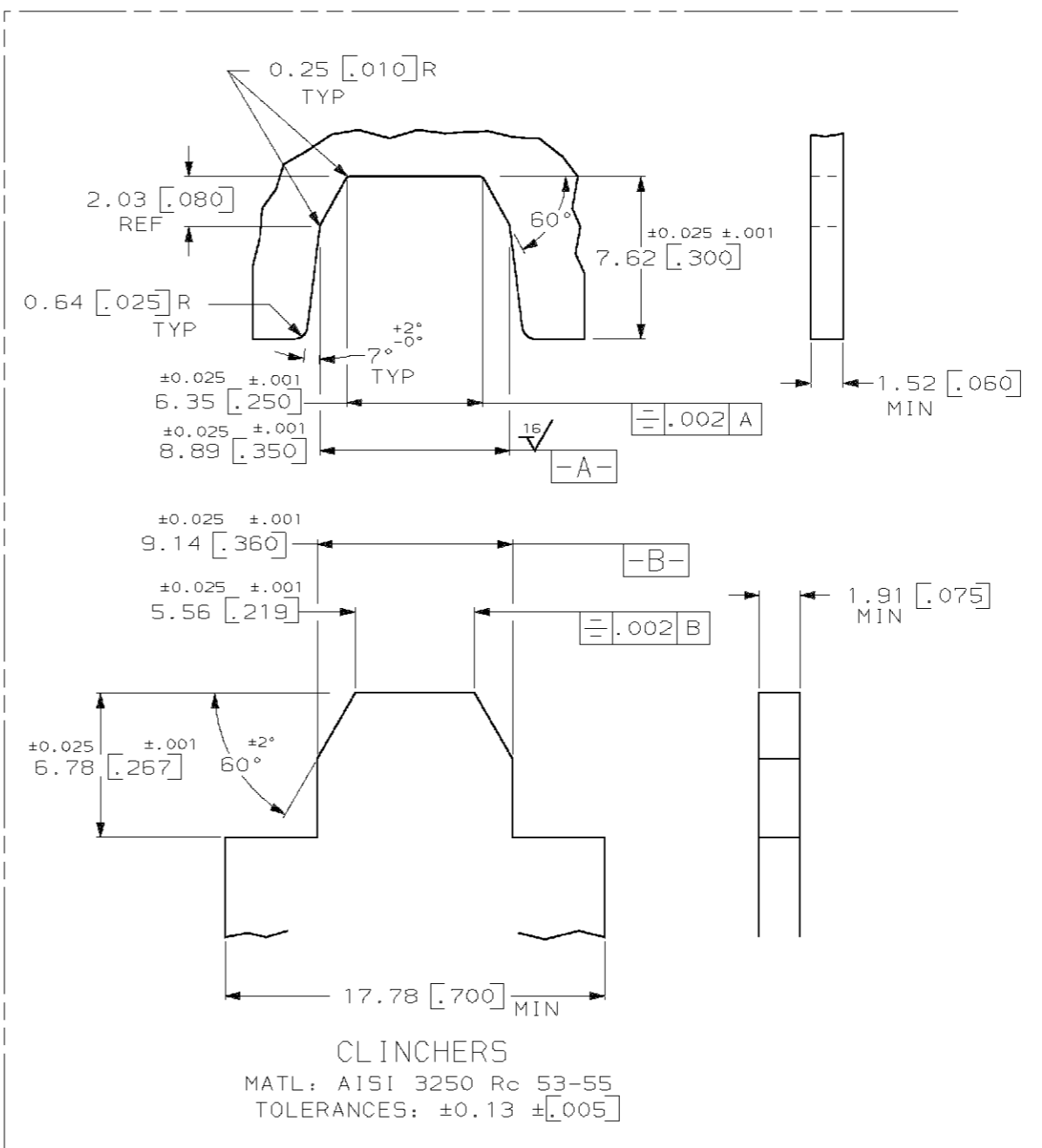
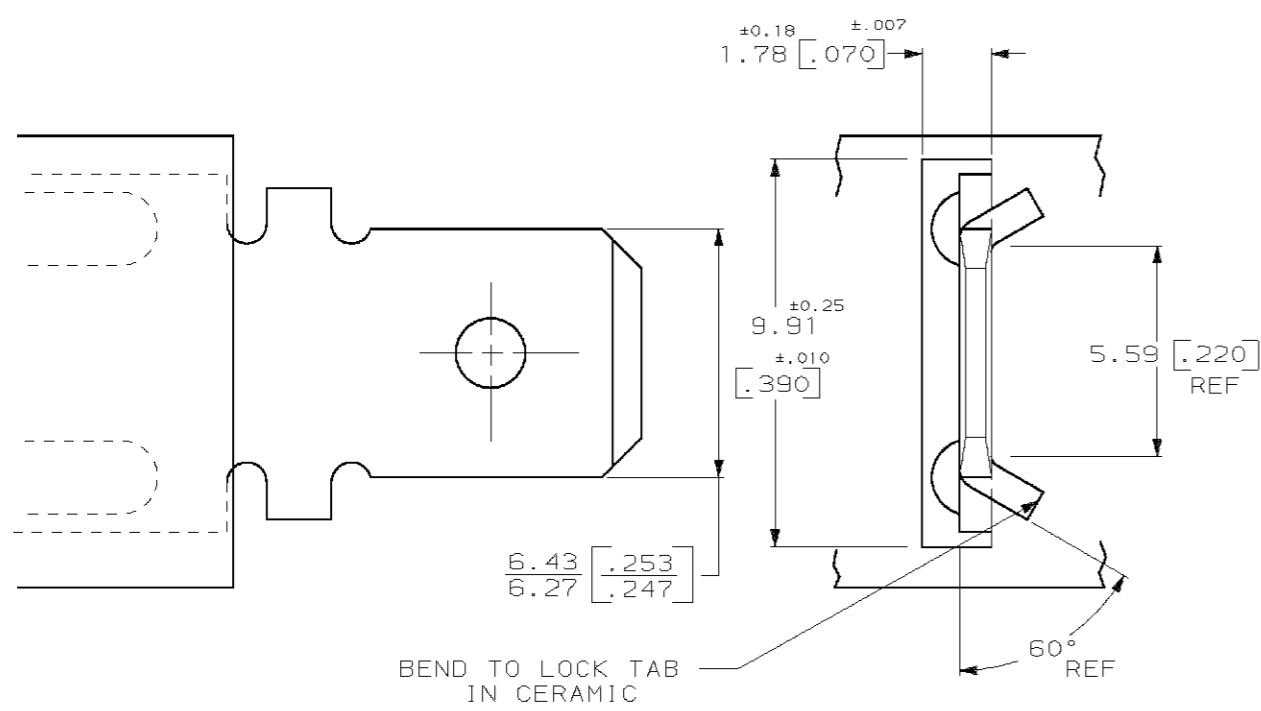
1- DIMENSIONS IN BRACKETS ARE IN INCHES.
 2- CONTINUOUS STRIP ON REELS.



METRIC

UNLESS OTHERWISE SPECIFIED DIMENSIONS ARE IN MM TOLERANCES ON:		DR JR RUTH 1/22/88		[20-15] 0.81-1.45 MM DIA		63522-1	
2 PL DEC ±		CHK M FEHER 11/23/88		WIRE SIZE		PART NO	
3 PL DEC ± 0.25 [010]		APPD J GILLESPIE 11/28/88		AMP AMP INCORPORATED Harrisburg, Pa. 17105			
ANGLES ±		APPD R KUZO 12/5/88					
MATERIAL CRS TEMP 2		PRODUCT SPEC		NAME TAB, NI-CHROME WIRE, .250 SERIES			
FINISH NICKEL .000100 MIN		APPLICATION SPEC 114-2097		SIZE B	FSCM NO 00779	DRAWING NO 63522	
		WEIGHT		SCALE 4:1	SHEET 1 OF 2		

LOC		DIST		REVISIONS				DATE	APPROVED
P	F	ZONE	LTR	DESCRIPTION					
AF	50		A	RELEASED			4/7/89	-	



CLINCHERS
 MATL: AISI 3250 Rc 53-55
 TOLERANCES: ±0.13 ±[0.005]

D
C
B
A
SHT 2 OF 2
63522

63522-1
 PART NO

UNLESS OTHERWISE SPECIFIED DIMENSIONS ARE IN INCHES TOLERANCES ON : MM		DR 11/22/88 JR RUTH		AMP INCORPORATED Harrisburg, Pa. 17105	
2 PL DEC ± _____ 3 PL DEC ± 0.38 [0.015] ANGLES ± _____		CHK 11/23/88 M FEHER			
MATERIAL		APPD 11/28/88 J GILLESPIE		NAME	
CRS TEMP 2		APPD 12/5/88 R KUZO		TAB, NI-CHROME WIRE, .250 SERIES	
FINISH		PRODUCT SPEC _____		SIZE	FSCM NO
NICKEL .000100 MIN		APPLICATION SPEC 114-2097		C	00779
		WEIGHT _____		DRAWING NO	63522
				SCALE	8:1
				SHEET 2 OF 2	

METRIC