

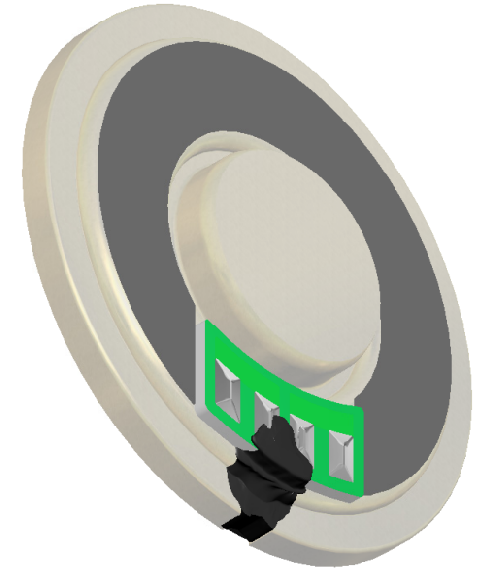
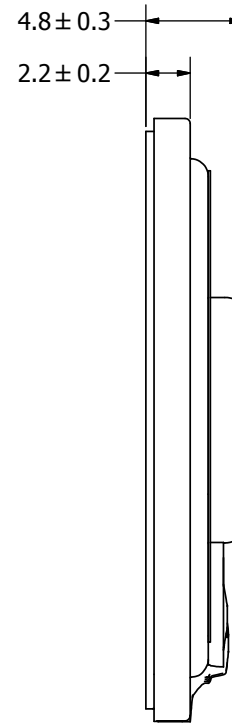
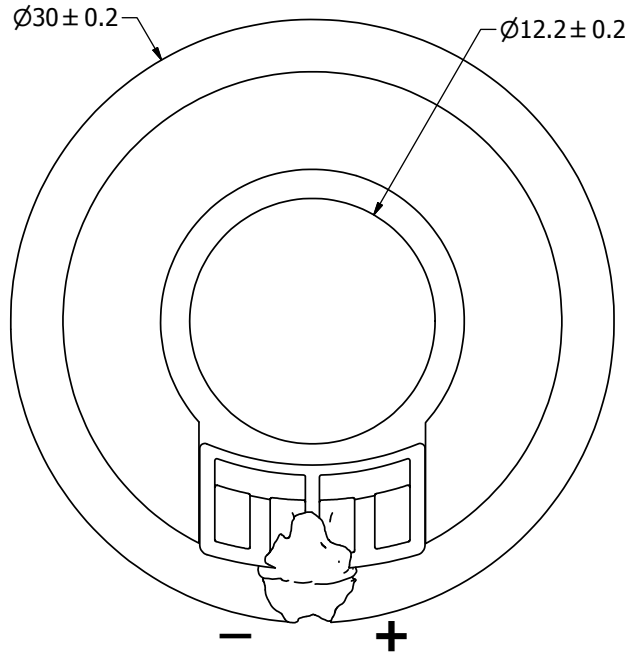
SPECIFICATIONS

| PARAMETERS | VALUES | UNITS |
|---|--------------|-------|
| RATED INPUT POWER | 0.5 | W |
| MAX INPUT POWER | 1 | W |
| IMPEDANCE | 8 ± 15% | OHM |
| OUTPUT SPL @ 1W/1M (AT 0.8, 1.0, 1.2, 1.5 kHz) | 82 ± 3 | dBa |
| DISTORTION (MAX.) | 5% | - |
| RESONANT FREQUENCY | 650 ± 20% | Hz |
| FREQUENCY RANGE | 650 ~ 15,000 | Hz |
| HOUSING MATERIAL | METAL | - |
| CONE MATERIAL | MYLR | - |
| MAGNET MATERIAL | Nd-Fe-B | - |
| OPERATING TEMPERATURE | -20 ~ +50 | °C |
| WEIGHT | 5.2 | grams |

THIS DOCUMENT CONTAINS DATA PROPRIETARY TO PROJECTS UNLIMITED, INC. ANY USE OR REPRODUCTION, IN ANY FORM, WITHOUT PRIOR WRITTEN PERMISSION OF PROJECTS UNLIMITED, INC. IS PROHIBITED.
©2003, Projects Unlimited Inc.

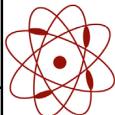
REVISION HISTORY

| LTR | DESCRIPTION | DATE | APPROVED |
|-----|--|-----------|----------|
| - | RELEASED FROM ENGINEERING | 11/8/2005 | |
| A | REVISED TO INVENTOR 3-D DRAWING TEMPLATE | 11/6/2008 | B.R. |



NOTES:

1. ALL DIMENSIONS ARE IN MILLIMETERS.
2. SPECIFICATIONS SUBJECT TO CHANGE OR WITHDRAWAL WITHOUT NOTICE.
3. THIS PART IS RoHS 2002/95/EC COMPLIANT.

| | | | | | | | | | |
|--|------|---|-----------|------------|--------------------------------------|-------------|-----------|--------------|----------------|
| UNLESS OTHERWISE SPECIFIED: DIMENSIONS ARE IN MILLIMETERS, TOLERANCES ARE ±0.5 AND ANGLES ARE ±3°. | SIZE | Designed by | Date | Checked by | Date | Approved by | Date | Drawn Date | |
| | A3 | J.A.F. | 11/8/2005 | B.R. | 11/8/2005 | E.P. | 11/8/2005 | 11/6/2008 | |
| AS03008MR-R.idw | |  pui audio <small>a projects unlimited company</small> | | | AS03008MR-R Speaker | | | Edition - | Sheet 1 / 1 |