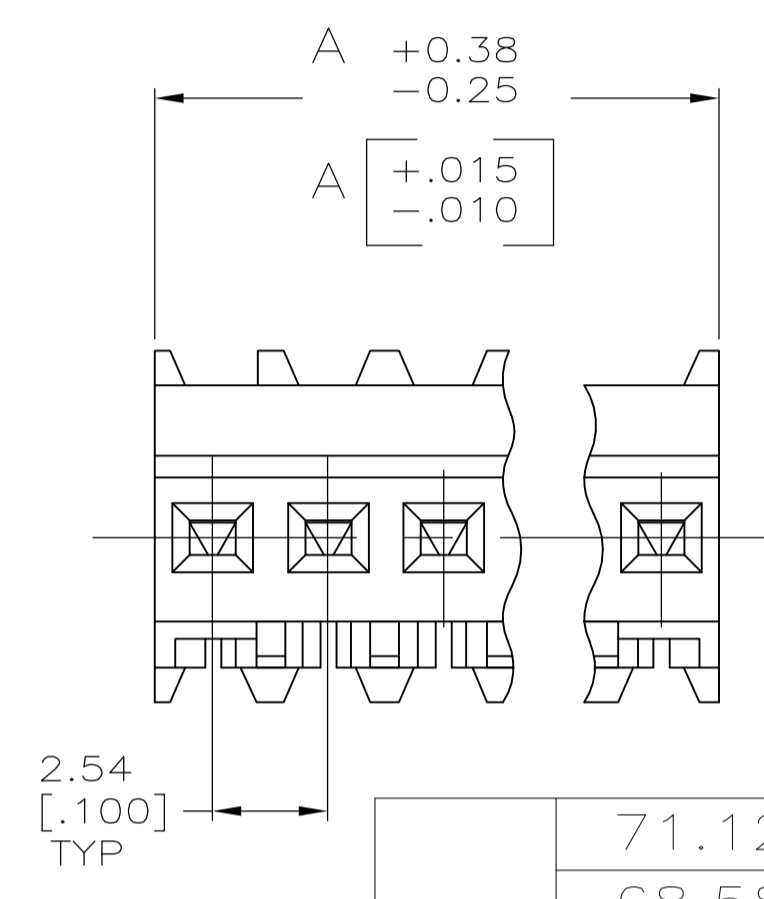
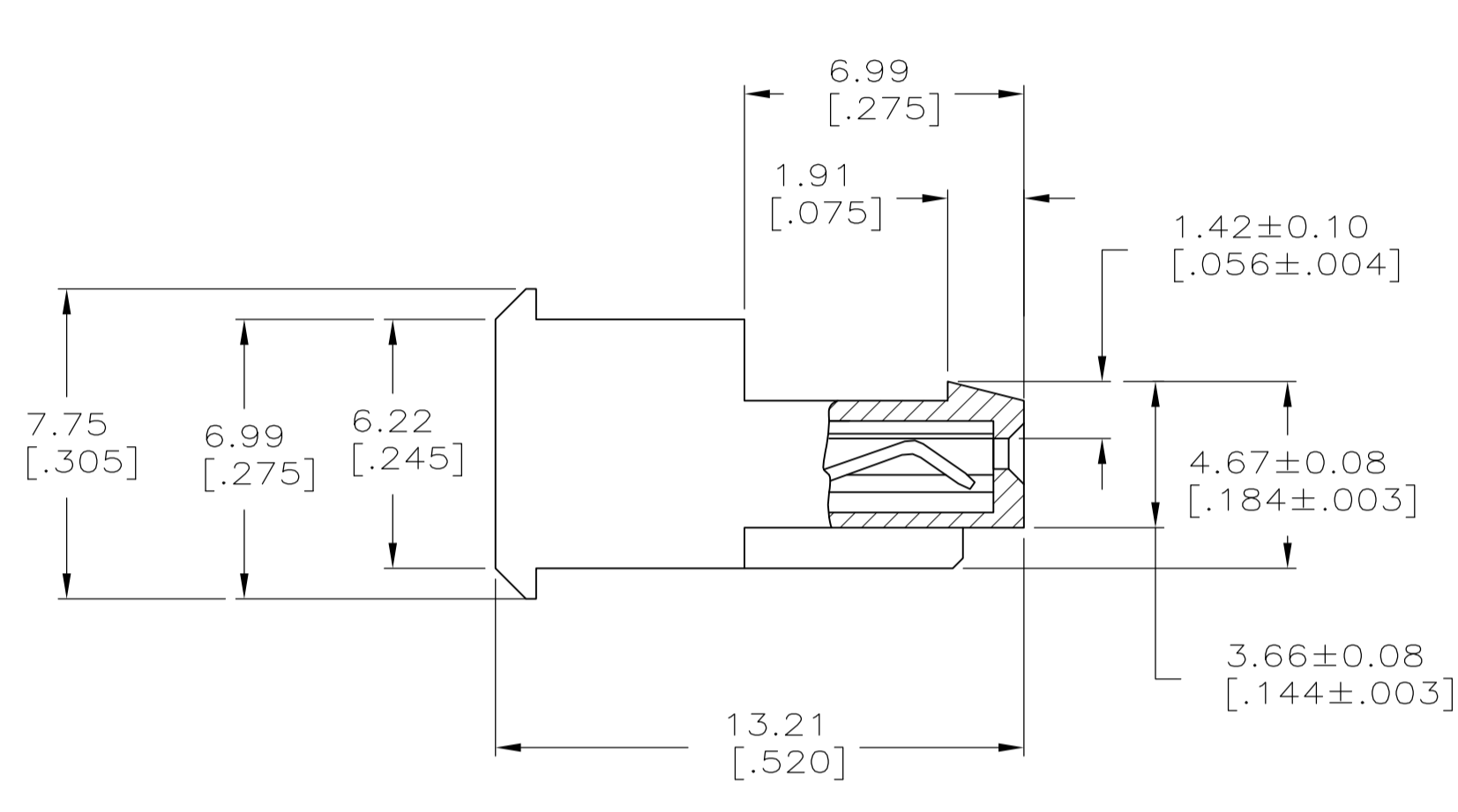
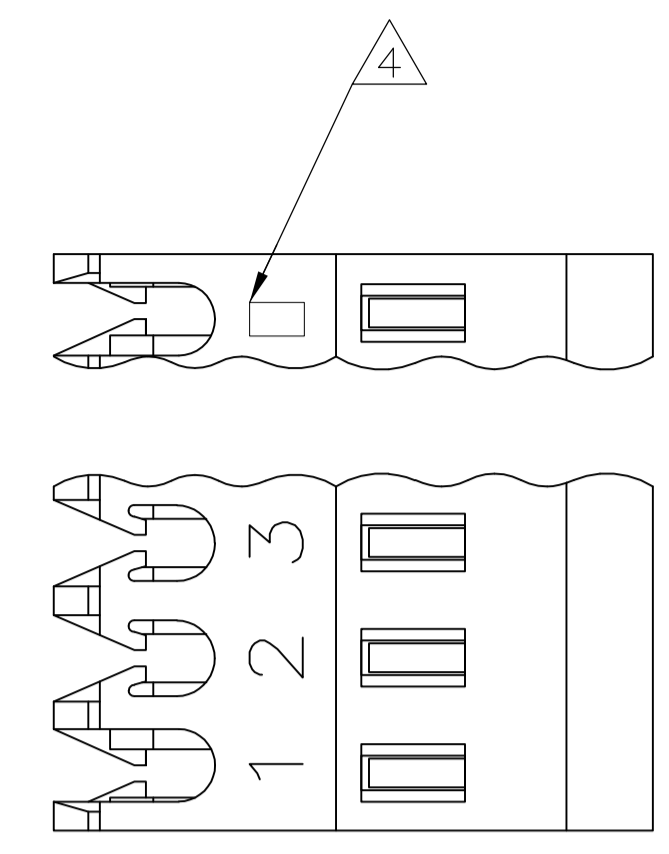


LOC		DIST		REVISIONS			
CM	00	REV	DATE	BY	APPV	DATE	BY
R		REVISED PER	ECO-12-007595			03AUG12	KH SM



- 1 MATERIAL: CONNECTOR-NYLON UL94V-0.
CONTACTS-0.30 [.012] THICK COPPER ALLOY
0.00038 [.000015] GOLD OR 0.00038 [.000015]
TOTAL GOLD FLASH OVER PALLADIUM NICKEL,
PER TE CONNECTIVITY'S DISCRETION, IN CONTACT
AREA WITH BRIGHT TIN-LEAD FOR 641190-2 THRU
2-641190-8, MATTE WHISKER MITIGATED TIN
FOR 3-641190-2 THRU 5-641190-8 OVER
NICKEL UNDERPLATE.
- 2 CONTACTS ACCEPT 22 AWG WIRE WITH 1.52 [.060] MAX INSULATION
DIAMETER.
- 3 CONTACTS MUST ACCEPT 0.64±0.03 [.025±.001] SQUARE POST AND
REMAIN LOCKED IN POSITION.
- 4 IDENTIFICATION NUMBER FOR LAST CIRCUIT MAY NOT APPEAR ON ALL
ASSEMBLIES.
- 5 DIMENSIONS IN BRACKETS ARE IN INCHES.
- 6 HOUSING FEATURES ARE: FEED THRU WITH LOCKING RAMP.
- 7 OBSOLETE PARTS: OBSOLETE CIS STREAMLINING PER
D.RENAUD/D.SINISI
- 8 RED COLOR STRIPE ON HOUSING (NOT SHOWN) MAY RUN DOWN BETWEEN RIBS.

DIM A	NO.OF POSN	ASSEMBLY
71.12 [2.800]	28	5-641198-8
68.58 [2.700]	27	5-641198-7
66.04 [2.600]	26	5-641198-6
63.50 [2.500]	25	5-641198-5
60.96 [2.400]	24	5-641198-4
58.42 [2.300]	23	5-641198-3
55.88 [2.200]	22	5-641198-2
53.34 [2.100]	21	5-641198-1
50.80 [2.000]	20	5-641198-0
48.26 [1.900]	19	4-641198-9
45.72 [1.800]	18	4-641198-8
43.18 [1.700]	17	4-641198-7
40.64 [1.600]	16	4-641198-6
38.10 [1.500]	15	4-641198-5
35.56 [1.400]	14	4-641198-4
33.02 [1.300]	13	4-641198-3
30.48 [1.200]	12	4-641198-2
27.94 [1.100]	11	4-641198-1
25.40 [1.000]	10	4-641198-0
22.86 [.900]	9	3-641198-9
20.32 [.800]	8	3-641198-8
17.78 [.700]	7	3-641198-7
15.24 [.600]	6	3-641198-6
12.70 [.500]	5	3-641198-5
10.16 [.400]	4	3-641198-4
7.62 [.300]	3	3-641198-3
5.08 [.200]	2	3-641198-2
DIM A	NO.OF POSN	ASSEMBLY

SUPERCEDED

7

SUPERCEDED

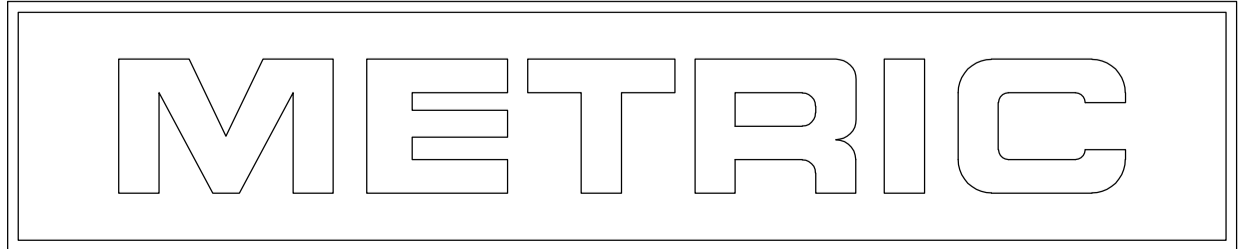
7

SUPERCEDED

7

DIM A	NO.OF POSN	ASSEMBLY
71.12 [2.800]	28	2-641198-8
68.58 [2.700]	27	2-641198-7
66.04 [2.600]	26	2-641198-6
63.50 [2.500]	25	2-641198-5
60.96 [2.400]	24	2-641198-4
58.42 [2.300]	23	2-641198-3
55.88 [2.200]	22	2-641198-2
53.34 [2.100]	21	2-641198-1
50.80 [2.000]	20	2-641198-0
48.26 [1.900]	19	1-641198-9
45.72 [1.800]	18	1-641198-8
43.18 [1.700]	17	1-641198-7
40.64 [1.600]	16	1-641198-6
38.10 [1.500]	15	1-641198-5
35.56 [1.400]	14	1-641198-4
33.02 [1.300]	13	1-641198-3
30.48 [1.200]	12	1-641198-2
27.94 [1.100]	11	1-641198-1
25.40 [1.000]	10	1-641198-0
22.86 [.900]	9	—641198-9
20.32 [.800]	8	—641198-8
17.78 [.700]	7	—641198-7
15.24 [.600]	6	—641198-6
12.70 [.500]	5	641198-5
10.16 [.400]	4	—641198-4
7.62 [.300]	3	—641198-3
5.08 [.200]	2	641198-2
DIM A	NO.OF POSN	ASSEMBLY

CONTAINS LEAD



THIS DRAWING IS A CONTROLLED DOCUMENT.

DIMENSIONS: mm [INCHES]

TOLERANCES UNLESS OTHERWISE SPECIFIED:

0. PLC	±
1. PLC	±
2. PLC	±
3. PLC	±
4. PLC	±
ANGLES	±

MATERIAL: 1

FINISH: 1

THIS DRAWING IS A CONTROLLED DOCUMENT.

DIN S. HOOVER 20-DEC-2004

CHK: D. ROSSI 20-DEC-2004

APPV: D. ROSSI 20-DEC-2004

NAME: MTA .100 CONNECTOR ASSEMBLY, 22 AWG, STANDARD

APPLICATION SPEC

SIZE: A1

WEIGHT: 00779

CUSTOMER DRAWING

SCALE: 6:1

SHEET 1 OF 1

REV R